



## Flow Cytometers for Hostile Environments

Alignment free, self-cleaning, self-calibrating and built to withstand tough military environments, the A40 range is unique:

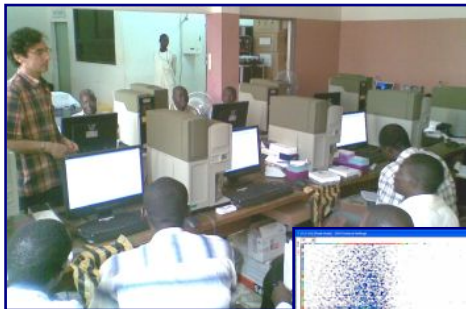
- **Auto40** - ideal for lymphocyte phenotyping
- **A4-Universal** - for a wide range of standard flow cytometry applications
- **A40-Microbiology** - extra high sensitivity model, ideal for research & microbiology
- **A40-Military** - detection of pathogens in environmental samples

Also available is a patented, closed-loop, ultra pure fluid box that allows the system to operate for long periods of time as a self-contained unit. This is in use in combat environments to detect airborne pathogens. All models in the range have a PC built in and are supplied with software to analyze the sample without the need for extra equipment.

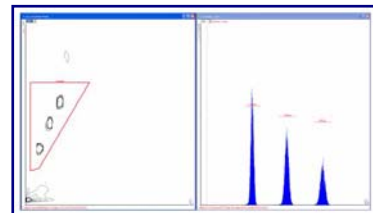
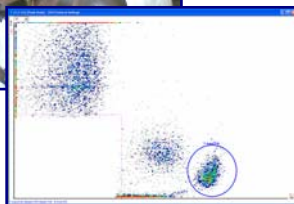


### Lymphocyte Phenotyping

The Auto40 is the automated, lower-cost progeny of the high sensitivity A40-MiniFCM and is well suited to monitoring lymphocyte sub-sets. The design allows it to be portable, reliable and user-friendly so that analyzing a blood sample is as simple as it needs to be; plug it in, run a control, run your sample and that's it...Easy.



The Auto40 makes flow cytometry and AIDS diagnostics reliable, user-friendly and more accessible to those who need it most. The Auto40 is available with either a 488nm (blue) or a 532nm (green) laser and can analyze up to 4 parameters simultaneously (1 light scatter + 3 fluorescence channels). Most commonly, the system is configured for automated CD4 counting (including CD4+ percentage of total lymphocytes) but it can be used for monitoring the expression of a wide variety of antigens. Three fluorescence detectors (PMTs) allow the instrument to adapt to your laboratory's requirements as they evolve.



### Latest News!

The A40-MiniFCM is now being used to:

- Develop assays for rapid detection of pathogenic bacteria including Lysteria, E. Coli and Salmonella in food products.
- Develop assays for a rapid, reliable and user-friendly method of diagnosing Mycobacterium Tuberculosis. The aim is to reduce detection times from several days to just a few minutes.
- Measure viruses undetectable on other flow cytometers

